

SWEET RUN STATE PARK

881 ACRES IN BEAUTIFUL
NORTHWEST LOUDOUN COUNTY
ALONG HARPER'S FERRY ROAD

Turnkey park, complete with environmental
education center, restored historic buildings, roads,
trails, parking, water and septic system and
electricity.



SWEET RUN STATE PARK
READY TO OPEN

CAMPGROUNDS
EQUESTRIAN TRAILS
HIKING TRAILS
APPALACHIAN TRAIL ACCESS
EDUCATION CENTER
WORKING FARM
FARMING HISTORY
WILDLIFE CONSERVATION

600 ACRES DONATED (BOB & DEE LEGGETT)
281 ACRES PURCHASED BY LOUDOUN COUNTY



2022 SESSION
BUDGET AMENDMENTS

SWEET RUN STATE PARK OPERATIONS

Natural and Historic Resources
Department of Conservation and Recreation

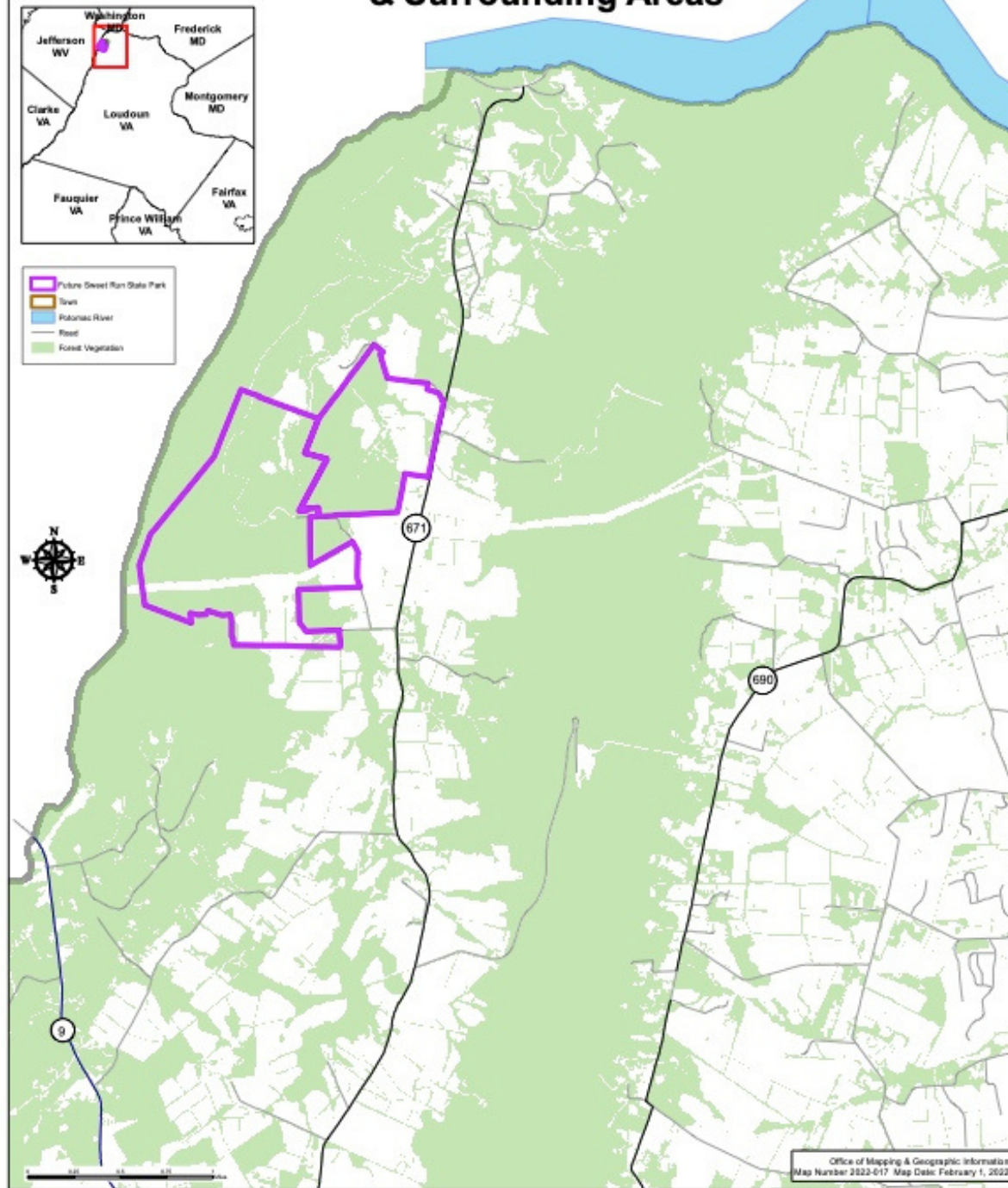
First Year - FY2023 Second Year - FY2024

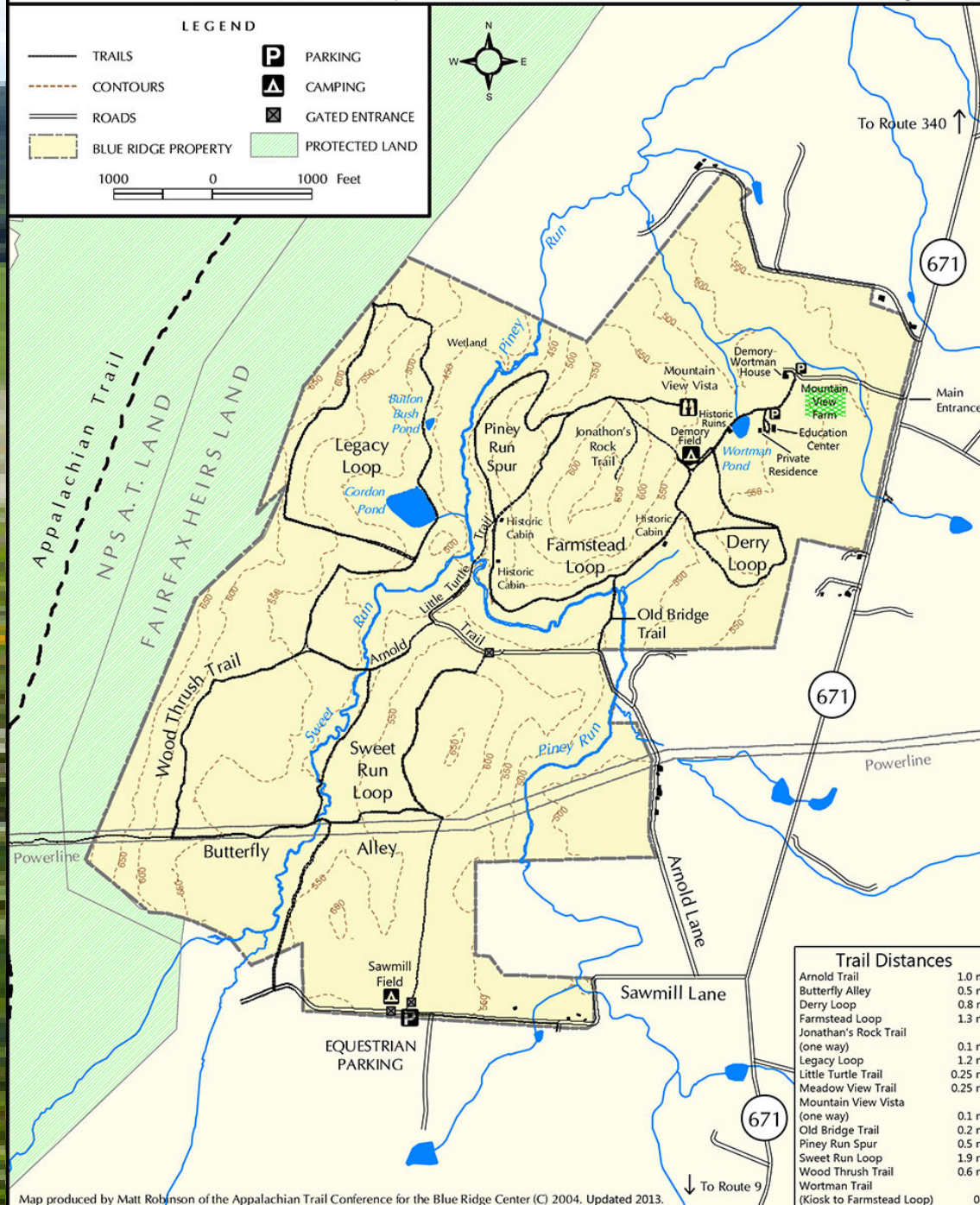
\$816,253 GF
4.00 FTE

\$613,253 GF
4.00 FTE

This amendment provides first and second year funding from the general fund to commence operations of Sweet Run State Park in Loudoun County.

Future Sweet Run State Park & Surrounding Areas





Education Center



Camping Facilities

Restrooms and hot showers on property



Established Trails



Road Infrastructure



Road from Main Entrance



Road to Education Center